

Powerhold Cartridge Spindles

Precision, performance, and cost were the design criteria for the development of these spindles. Each is available with or without the collet closer and draw tube.



POWERHOLD INC. offers two Cartridge Spindle Models

D-40,000 for 5C collets

Technical Features:

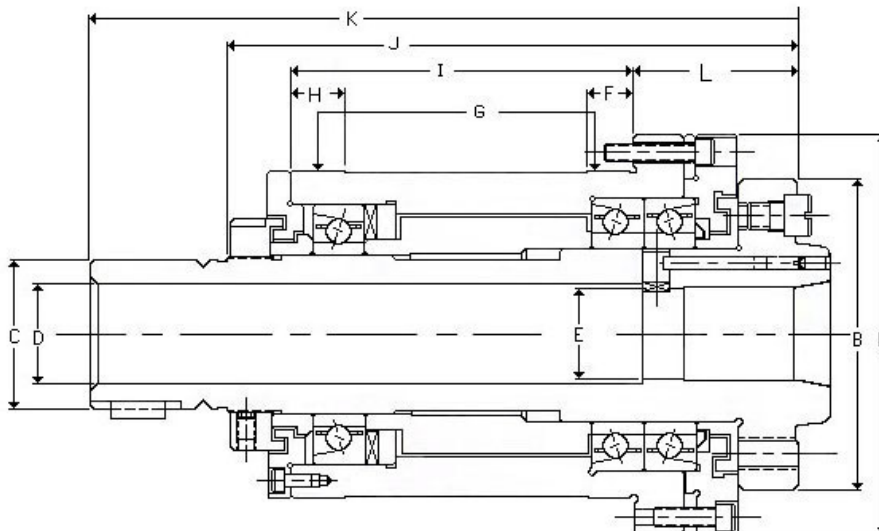
- Heavy duty 4" A-2 Spindle nose
- 5C internal taper
- Max. 5000 RPM
- Permanently lubricated
- 1.06" bar capacity with air operated draw-tube
- Collet closure and drawtube optional

Applications:

- Suited for any standard or special lathe
- Contact our Engineering Dept. with your lathe specifications

Dimensions (in):

Model	A	B	C	D	E	F	G	H	I	J	K	L
5C	5.50	4.25	2.0625	1.406	1.250	0.62	4.50	0.75	4.69	7.81	9.69	2.25



D-41,000 for 16C Collets

Technical Features:

- Heavy duty 5" A2 Spindle nose
- 16C internal taper
- Max. 4500 RPM
- Permanently lubricated
- 1.62" bar capacity with air operated draw-tube
- Collet closure and drawtube optional

Applications:

- Suited for any standard or special lathe
- Contact our Engineering Dept. with your lathe specifications

Dimensions (in):

Model	A	B	C	D	E	F	G	H	I	J	K	L
16C	7.00	5.25	2.625	2.13	1.8899	1.25	5.50	1.0	9.0	13.20	15.69	2.75

