

Retractable Jaw Chucks



Powerhold Retractable Jaw chucks are a 2-in-1 chuck that combines a 3-jaw power chuck and face driver into one assembly. When turning shafts or gun barrels, accuracy often demands turning the entire length in a single operation. Face driving alone requires a lighter cut and long cycle times. The retractable jaw chuck, or shaft-chuck, solves this problem.

The operator first turns a journal close to the chuck face using the integrated face driver. Then stroke the cylinder to grip the turned journal, allowing for deeper cuts and faster cycle time when machining the remaining length of the shaft. Finally, the jaws are retracted and the entire part can be finish turned, again using the face driver.

The POWERHOLD retractable-jaw chuck is designed to work with a standard single-piston actuator, resulting in a lower total capital investment. A Powerhold retractable jaw chuck can be turnkeyed or retrofitted, in most cases using the OEM supplied cylinder.

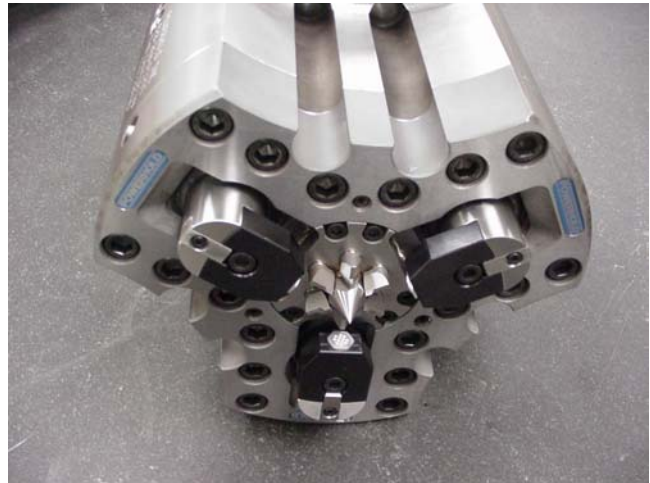
Contact the Powerhold Inc. Sales Team @ 800-349-1044

CN110508

Retractable Jaw Chucks

Chuck Features

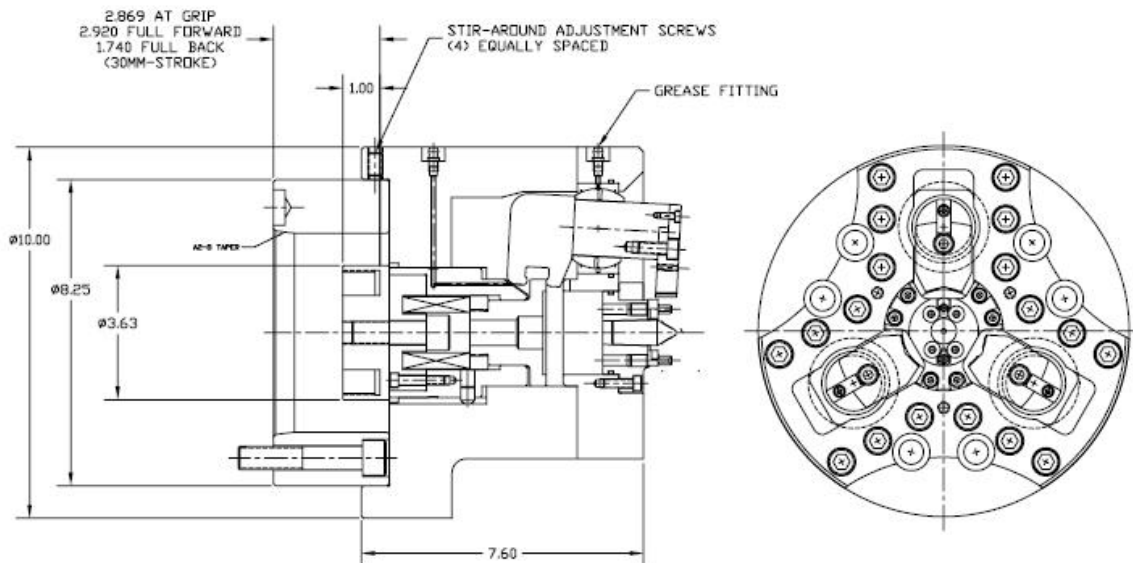
- Chuck size - 10" OD
- Self-Centering chuck jaws
- Jaws - Soft blank or serrated
- Max Grip Diameter – 3"
- Drawhead Stroke – 35mm
- Jaw Movement – 25mm
- Max Drawbar Force – 16,500 lbs
- Max Grip Force – 5,350 lbs/jaw
- Max Speed – 4,000 RPM
- A2-8 or A2-11 Indirect Mount



Options

Center Housing Features

- Face Driver – 3 or 6 Pins
- Spring-loaded centerpoint
- Parabolic washer behind drive pins compensates for out-of-square surface of drive face.
- Larger custom chuck sizes on request
- Special extended stroke options – up to 80 mm as required
- Use standard Bruckner brand face driver (or other brands on request)
- Long stroke hydraulic cylinder



Contact the Powerhold Inc. Sales Team @ 800-349-1044

CN110508